A black and white photograph of two young children, a girl on the left and a boy on the right, both wearing denim overalls. They are looking down at a white, scalloped-edged toy in front of them. The background is a simple, light-colored wall.

Governance Strategies to Support An Efficient and Effective PN-5 System

P5FS Webinar Series – Part 4*

March 3, 2021



- Six-part series:

1. Jan 13 – Introduction to Comprehensive Fiscal Strategies
2. Jan 27 – Fiscal Strategies 1: Mapping & Modeling
3. Feb 10 – Fiscal Strategies 2: Revenue Generation & Innovative Strategies
- 4. March 3 – Governance and Shared Leadership Strategies**
5. March 17 – Bringing it All Together
6. March 31 – Bonus case study webinar

Webinar recordings and slides available at:

www.prenatal5fiscal.org/webinarseries

Agenda

- 01 Comprehensive fiscal analysis to inform systems change
- 02 Local governance change makers
- 03 Redesigning state governance systems
- 04 Next steps

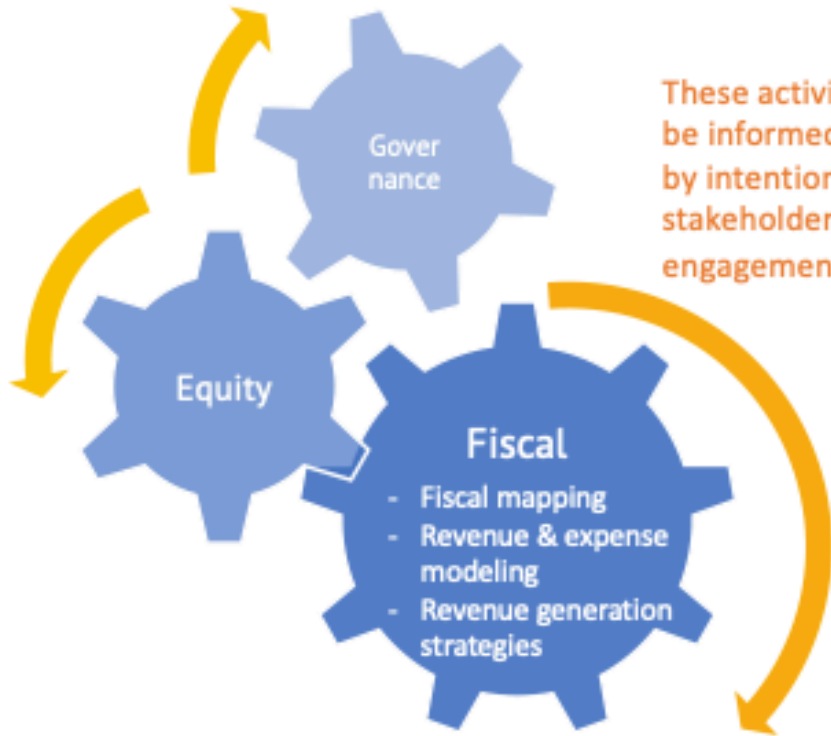
01

Comprehensive Fiscal Analysis to Inform Systems Change

Comprehensive Approach

States and communities should make use of tools and resources to gather and analyze data to better understand their current system...

These activities should be informed and driven by intentional stakeholder engagement...



The results can inform and be utilized for a comprehensive fiscal approach that **increases funding, better aligns funding, and ensures efficient funding and governance structures...**

Comprehensive Fiscal Approach

Policy – Program - Practice

All in service of a **comprehensive PN-5 system** that works for families, providers, businesses, and caregivers.

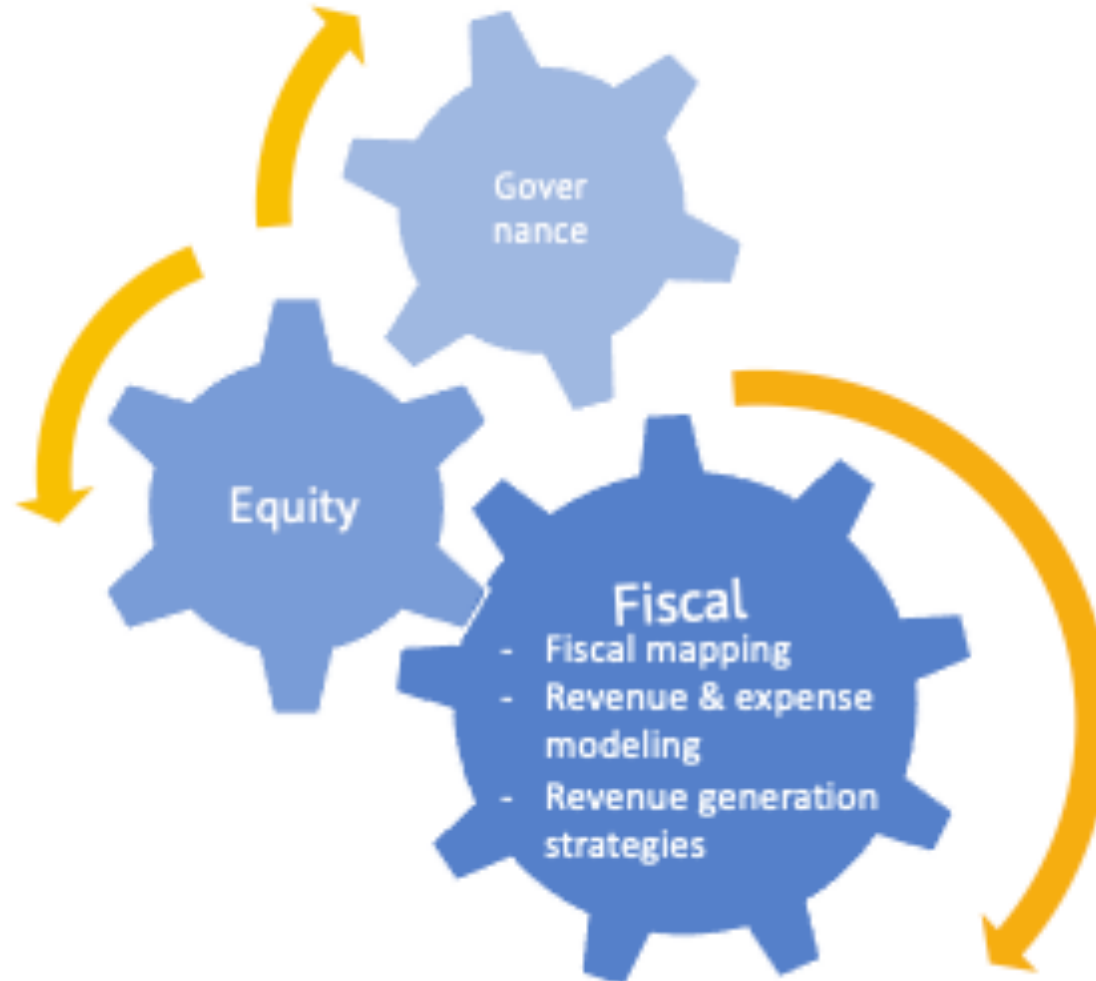


Engagement and Systems Change

Comprehensive Analysis

Vision for PN-5 System

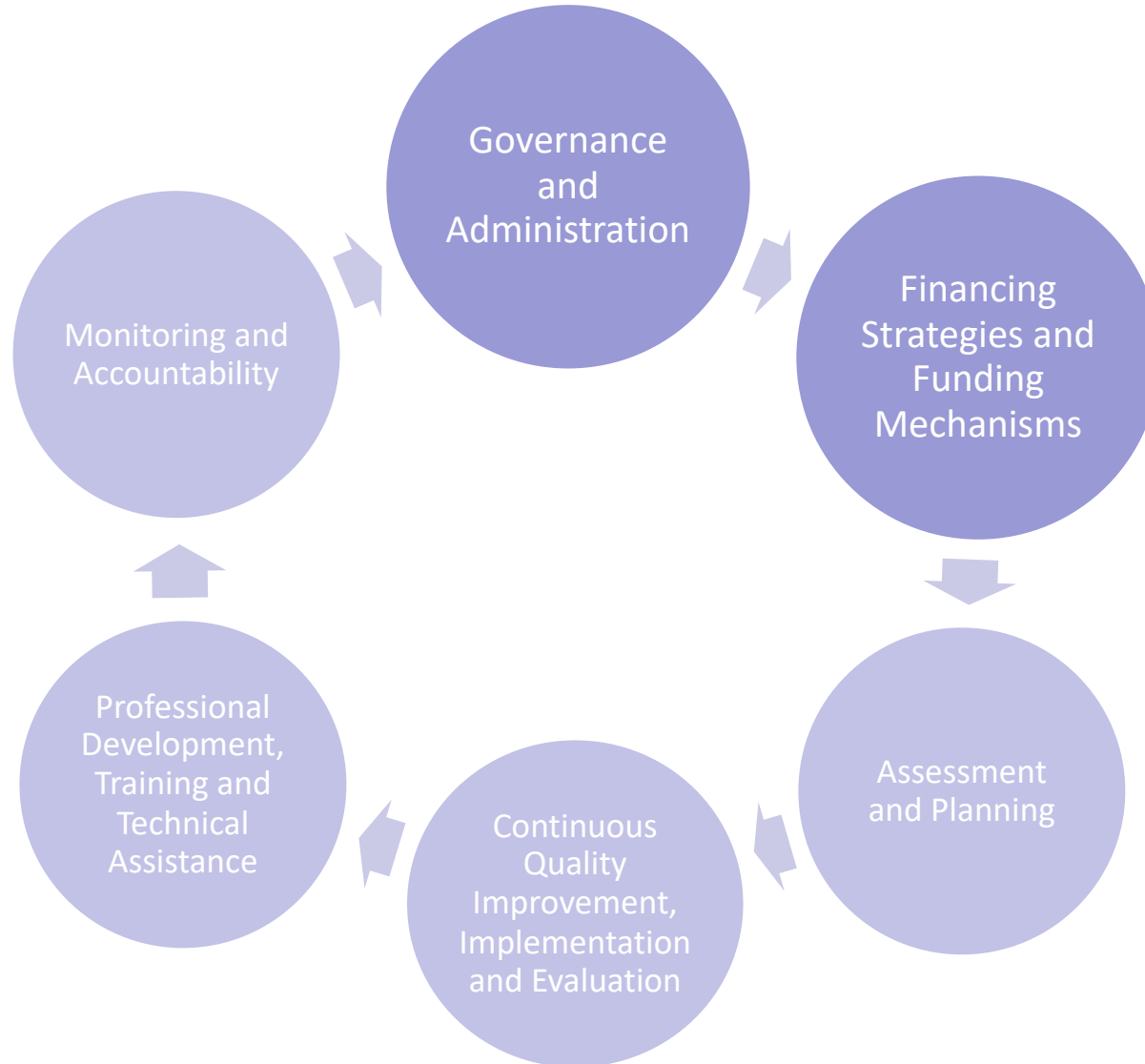
Governance & Equity Components of Comp. Analysis



A system that

- works for all children and ensures that programming reaches and positively impacts those children farthest from opportunity.
- is fair to providers and supports their developing capacity for quality implementation;
- **uses public resources wisely and efficiently, augmenting private resources from those families who can afford services.**
- **acknowledges embedded societal inequities and implements changes to remediate inequity.**
- compensates the workforce at a level that allows for financial stability and acknowledges their significant impact on child development.
- supports the entirety of a child's experiences before entering kindergarten, including prenatal supports for expectant mothers.

Building a Strong System



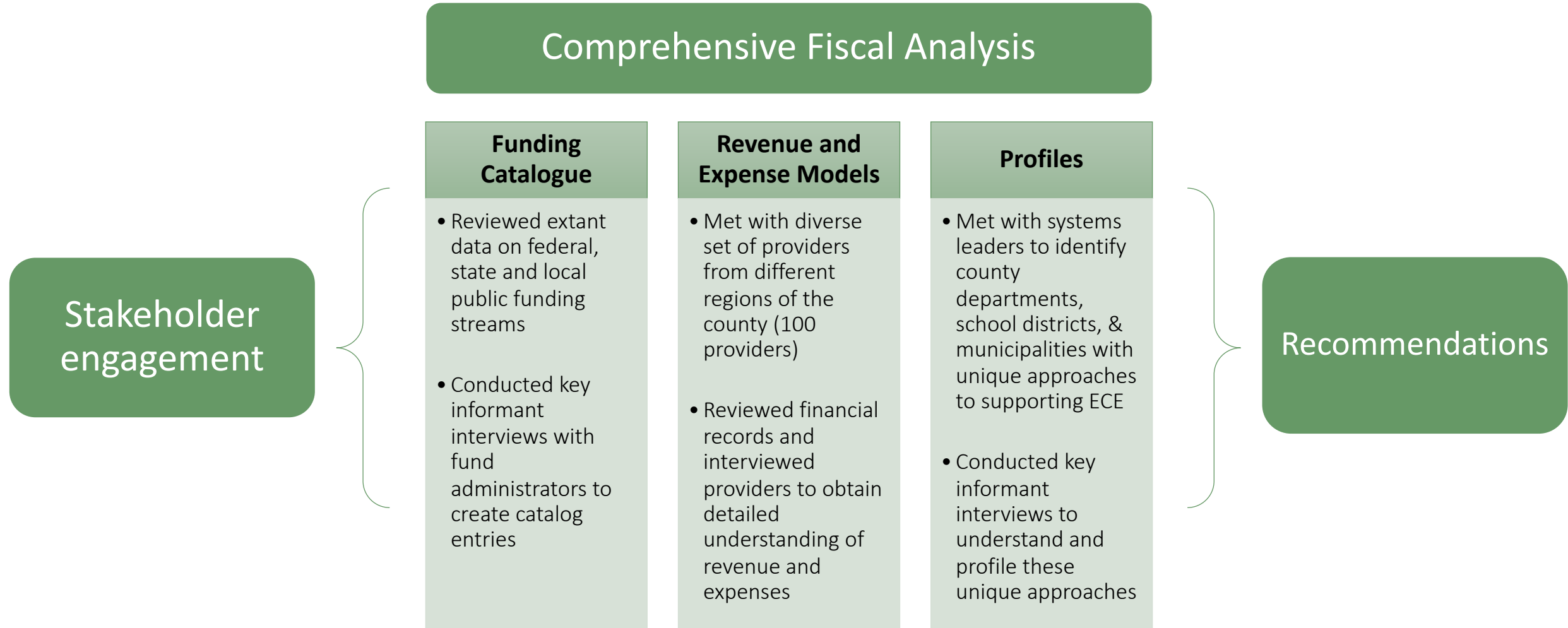
Assessing Readiness

- Consider the role of shared leadership/governance for the prenatal to five system (leadership, oversight and management), how are these components part of previous or current work on fiscal strategies?
- As you are approaching fiscal strategies work, how are your efforts aligned with the governance of your prenatal to five system?

02

Governance Opportunities: Los Angeles County

Comprehensive Fiscal Analysis Approach





Los Angeles County Comprehensive Fiscal Analysis



Quality and Productivity
Commission





Reflecting on
comprehensive fiscal
analysis: Board of
Supervisor perspective

- What funding currently supports early care and education services in Los Angeles County?
- How are these funds being used and are they being fully leveraged?
- What opportunities exist to better coordinate, streamline, and maximize existing funds?





Using the CFA to drive governance activities:

- Internal staffing
- Board of Supervisors



State and Local Connection

2019 LOS ANGELES COUNTY ECE SUMMIT

Friday, December 6, 2019 • 8:00am–3:30pm

Center at Cathedral Plaza

555 W. Temple St., Los Angeles 90012



Connection between state and local

Speakers from:

- Governor's Office
- LA County Board of Supervisors
- LA County government agencies
- Community level elected officials

PRESENTED BY



03

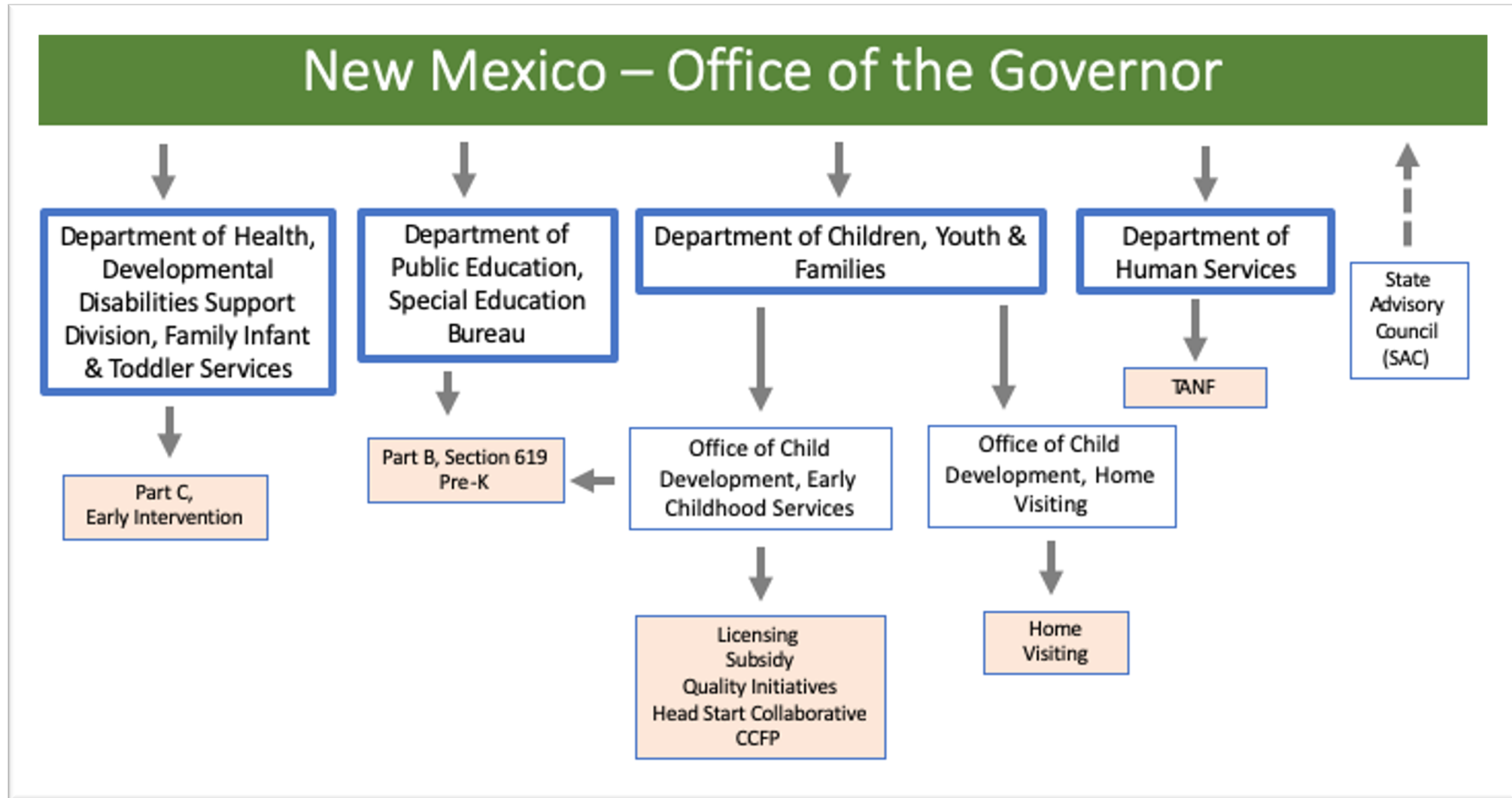
Redesigning state governance systems

Unpacking Governance

What functions will the state need to perform to achieve the priorities?

Governance Models

Model	Coordinated	Consolidated	New Independent Agency
Creation Method	Collaboration and coordination across different agencies	Consolidation of existing programs and divisions into one state agency	Creation of a dedicated early childhood agency
Structures	Formal agreements across agencies, a governor's coordinating office, and/or a children's cabinet	Focused on bringing primary funding sources into one agency – e.g., bringing multiple existing funding streams under the department of education or human services	Authority over and accountability for many services and programs – typically an executive branch entity or new department with a board or commissioner reporting to governor
Example	Pennsylvania	Maryland	New Mexico



- NM Early Childhood Education and Care Department began operating July 1, 2020.
- Cabinet-level leadership.
- Brings together Public Ed, Children/Youth, and Families/Health
- New funding stream established - Early Childhood Education & Care Fund, with \$20 million distribution July 2021

Administrative Services Division

- Budget and Finance
- Human Resources
- Background Check

Family Support and Early Intervention Division

- FIT
- Home Visiting
- Families First

Early Care, Education and Nutrition Division

- Child care Licensing and Assistance
- New Mexico PreK
- Food and Nutrition

Policy, Research and Quality Initiatives Division

- Workforce Development and Quality Supports
- Data, Assessment and Research
- Policy and Planning

Investing for tomorrow, delivering today



04

Next Steps

Check out new resources on our website: www.prenatal5fiscal.org

Webinar slides and recording will be posted shortly

Join us on March 17 for Part 5!



Thank you!



P5
Fiscal
Strategies

www.prenatal5fiscal.org
info@prenatal5fiscal.org